

上海松铭传动机械有限公司
SHANGHAI SONGMING TRANSMISSION MACHINERY CO.,LTD

TAPER BUSHING



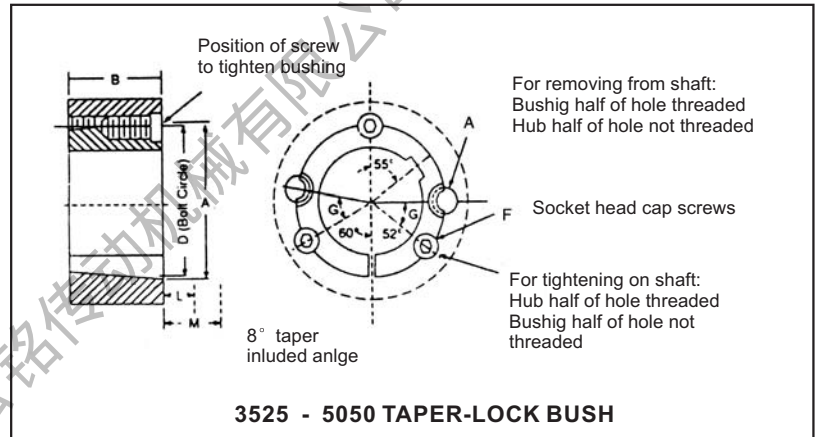
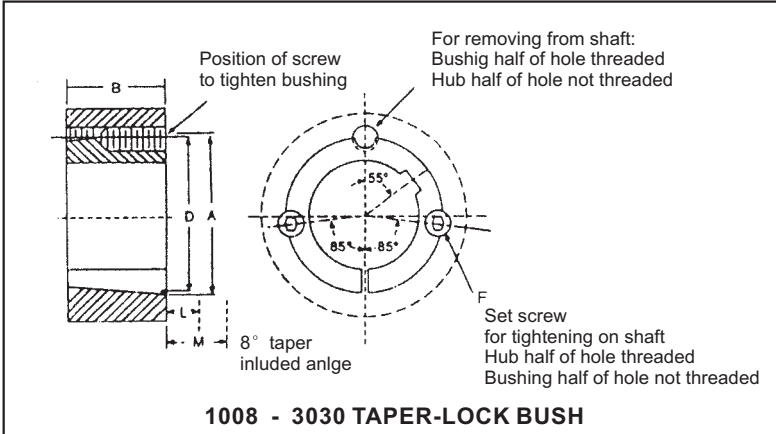
PULLEYS & TAPER BUSHES

目录 Contents

Taper Bushings ----- 1



Taper Bushings

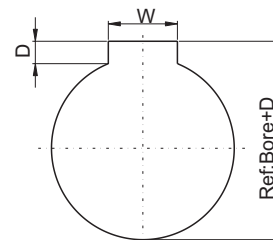


Dimensions for 1008 thru 3030 TAPER Bushings

Bush.No.	A	B	D	Set Screws
1008	1.386	7/8	121/64	1/4x1/2
1108	1.511	7/8	129/64	1/4x1/2
1210	17/8	1	13/4	3/8x5/8
1215	17/8	1 1/2	13/4	3/8x5/8
1310	2	1	17/8	3/8x5/8
1610	2 1/4	1	2 1/8	3/8x5/8
1615	2 1/4	1 1/2	2 1/8	3/8x5/8
2012	23/4	1 1/4	25/8	7/16x7/8
2017	23/4	1 3/4	25/8	7/16x7/8
2517	33/8	1 3/4	3 1/4	1/2x1
2525	33/8	2 1/2	3 1/4	1/2x1
3020	4 1/4	2	4	5/8x1 1/4
3030	4 1/4	3	4	5/8x1 1/4

Dimensions for 3535 thru 5050 TAPER Bushings

Bush.No.	A	B	D	Socket Head Cap Screws	G
3535	5	3 1/2	4.83	1/2x1 1/2	40
4040	5 3/4	4	5.54	5/8x1 3/4	40
4545	6 3/8	4 1/2	6.13	3/4x2	40
5050	7	5	6.72	7/8x2 1/4	37



ISO STANDARD METHOD FOR MEASURING KEYSEAT DEPTH
D: depth measured at centering

MM Bore Key way dimensions conform to ISO standard

CLOSE GRAIN CAST IRON

Taper bushings made of steel or stainless steel are available as made to order.

Taper Bushing Keyway

TAPER BUSHING KEYWAY

DIN 6885
JIS B 1301-1976
UNI 6604-1969
GB 1095-1979

Bush. No.	Bore	Bushing Keyway	Bush. No.	Bore	Bushing Keyway	Bush. No.	Bore	Bushing Keyway	Bush. No.	Bore	Bushing Keyway	Bush. No.	Bore	Bushing Keyway	Bush. No.	Bore	Bushing Keyway
1008	10	3×1.40	1610	14	5×2.30	2517	20	6×2.80	3020	25	8×3.30	3535	35	10×3.30	4545	55	16×4.30
	11	4×1.80		16	5×2.30		22	6×2.80		28	8×3.30		38	10×3.30		60	18×4.40
	12	4×1.80		18	6×2.80		24	8×3.30		30	10×3.30		40	12×3.30		65	20×4.90
	14	5×2.30		19	6×2.80		25	8×3.30		32	10×3.30		42	12×3.30		70	20×4.90
	16	5×2.30		20	6×2.80		28	8×3.30		35	10×3.30		45	14×3.80		75	25×5.40
	18	6×2.80		22	6×2.80		30	8×3.30		38	10×3.30		48	14×3.80		80	22×5.40
	19	6×2.80		24	8×3.30		32	10×3.30		40	12×3.30		50	16×4.30		85	22×5.40
	20	6×2.80		25	8×3.30		35	10×3.30		42	12×3.30		55	16×4.30		90	25×5.40
	22	6×2.80		28	8×3.30		38	10×3.30		45	14×3.80		60	18×4.40		95	25×5.40
	24	8×2.00		30	8×3.30		40	12×3.30		48	14×3.80		65	18×4.40		105	28×6.40
25	8×1.30	32	10×3.30	42	12×3.30	50	16×4.30	70	20×4.90	110	28×6.40						
1108	10	3×1.40	1615	14	5×2.30	2517	20	6×2.80	3020	25	8×3.30	3535	35	10×3.30	4545	55	16×4.30
	11	4×1.80		16	5×2.30		22	6×2.80		28	8×3.30		38	10×3.30		60	18×4.40
	12	4×1.80		18	6×2.80		24	8×3.30		30	10×3.30		40	12×3.30		65	20×4.90
	14	5×2.30		19	6×2.80		25	8×3.30		32	10×3.30		42	12×3.30		70	20×4.90
	16	5×2.30		20	6×2.80		28	8×3.30		35	10×3.30		45	14×3.80		75	25×5.40
	18	6×2.80		22	6×2.80		30	8×3.30		38	10×3.30		48	14×3.80		80	22×5.40
	19	6×2.80		24	8×3.30		32	10×3.30		40	12×3.30		50	16×4.30		85	22×5.40
	20	6×2.80		25	8×3.30		35	10×3.30		42	12×3.30		55	16×4.30		90	25×5.40
	22	6×2.80		28	8×3.30		38	10×3.30		45	14×3.80		60	18×4.40		95	25×5.40
	24	8×3.30		30	8×3.30		40	12×3.30		48	14×3.80		65	18×4.40		105	28×6.40
25	8×1.30	32	10×3.30	42	12×2.20	50	16×4.30	70	20×4.90	110	28×6.40						
1210	11	4×1.80	1615	14	5×2.30	2517	20	6×2.80	3020	25	8×3.30	3535	35	10×3.30	4545	55	16×4.30
	12	4×1.80		16	5×2.30		22	6×2.80		28	8×3.30		38	10×3.30		60	18×4.40
	14	5×2.30		18	6×2.80		24	8×3.30		30	10×3.30		40	12×3.30		65	20×4.90
	16	5×2.30		19	6×2.80		25	8×3.30		32	10×3.30		42	12×3.30		70	20×4.90
	18	6×2.80		20	6×2.80		28	8×3.30		35	10×3.30		45	14×3.80		75	25×5.40
	19	6×2.80		22	6×2.80		30	8×3.30		38	10×3.30		48	14×3.80		80	22×5.40
	20	6×2.80		24	8×3.30		32	10×3.30		40	12×3.30		50	16×4.30		85	22×5.40
	22	6×2.80		25	8×3.30		35	10×3.30		42	12×3.30		55	16×4.30		90	25×5.40
	24	8×3.30		28	8×3.30		40	12×3.30		48	14×3.80		60	18×4.40		95	25×5.40
	25	8×1.30		30	8×3.30		42	12×2.20		50	16×4.30		65	18×4.40		105	28×6.40
32	10×3.30	32	10×3.30	42	12×2.20	60	18×4.40	70	20×4.90	110	28×6.40						
1215	11	4×1.80	1615	14	5×2.30	2517	20	6×2.80	3020	25	8×3.30	3535	35	10×3.30	4545	55	16×4.30
	12	4×1.80		16	5×2.30		22	6×2.80		28	8×3.30		38	10×3.30		60	18×4.40
	14	5×2.30		18	6×2.80		24	8×3.30		30	10×3.30		40	12×3.30		65	20×4.90
	16	5×2.30		19	6×2.80		25	8×3.30		32	10×3.30		42	12×3.30		70	20×4.90
	18	6×2.80		20	6×2.80		28	8×3.30		35	10×3.30		45	14×3.80		75	25×5.40
	19	6×2.80		22	6×2.80		30	8×3.30		38	10×3.30		48	14×3.80		80	22×5.40
	20	6×2.80		24	8×3.30		32	10×3.30		40	12×3.30		50	16×4.30		85	22×5.40
	22	6×2.80		25	8×3.30		35	10×3.30		42	12×3.30		55	16×4.30		90	25×5.40
	24	8×3.30		28	8×3.30		40	12×3.30		48	14×3.80		60	18×4.40		95	25×5.40
	25	8×1.30		30	8×3.30		42	12×2.20		50	16×4.30		65	18×4.40		105	28×6.40
32	10×3.30	32	10×3.30	42	12×2.20	60	18×4.40	70	20×4.90	110	28×6.40						
1310	14	5×2.30	2012	18	6×2.80	2525	22	6×2.80	3030	25	8×3.30	3535	35	10×3.30	4040	40	12×3.30
	16	5×2.30		19	6×2.80		24	8×3.30		28	8×3.30		38	10×3.30		42	12×3.30
	18	6×2.80		20	6×2.80		25	8×3.30		30	10×3.30		40	12×3.30		45	14×3.80
	19	6×2.80		22	6×2.80		28	8×3.30		32	10×3.30		42	12×3.30		48	14×3.80
	20	6×2.80		24	8×3.30		30	10×3.30		35	10×3.30		45	14×3.80		50	16×4.30
	22	6×2.80		25	8×3.30		32	10×3.30		38	10×3.30		48	14×3.80		55	16×4.30
	24	8×3.30		28	8×3.30		40	12×3.30		40	12×3.30		50	16×4.30		60	18×4.40
	25	8×1.30		30	8×3.30		42	12×3.30		42	12×3.30		55	16×4.30		65	18×4.40
	28	8×3.30		32	10×3.30		45	14×3.80		45	14×3.80		60	18×4.40		70	20×4.90
	30	8×3.30		35	10×3.30		48	14×3.80		48	14×3.80		65	18×4.40		75	20×4.90
32	10×3.30	38	10×3.30	50	16×4.30	50	16×4.30	70	20×4.90	80	22×5.40						
35	10×3.30	40	12×3.30	60	18×4.40	60	18×4.40	75	20×4.90	85	22×5.40						

Taper Bushing Keyway

TAPER BUSHING KEYWAY

USAS B 17.1 1967
KEYS AND KEYSEATS

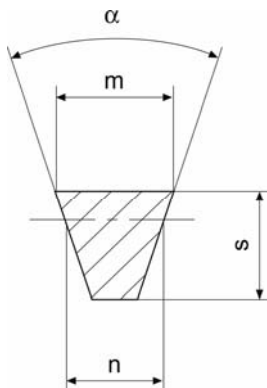
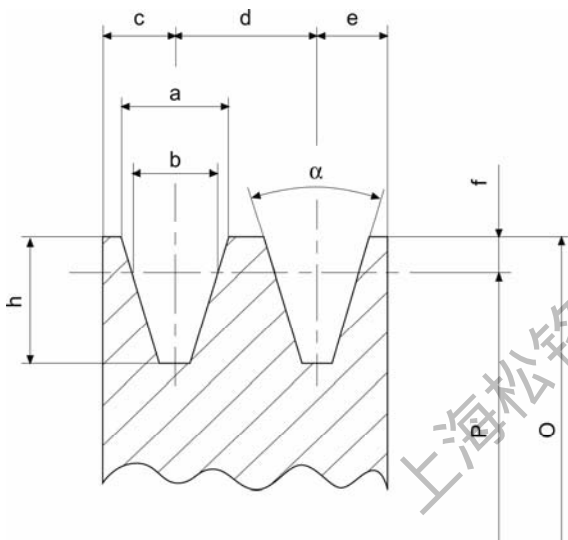
Bush. No.	Bore	Bushing Keyway	Bush. No.	Bore	Bushing Keyway	Bush. No.	Bore	Bushing Keyway	Bush. No.	Bore	Bushing Keyway	Bush. No.	Bore	Bushing Keyway	Bush. No.	Bore	Bushing Keyway					
1008	1/2	1/8 × 1/16	1610	1/2	1/8 × 1/16	2517	1/2	1/8 × 1/16	3020	7/8	3/16 × 3/32	3535	13/16	1/4 × 1/8	4545	115/16	1/2 × 1/4					
	9/16	3/16 × 3/32		9/16	3/16 × 3/32		5/8	1/4 × 1/8		5/8	5/16 × 5/32		15/16	3/8 × 3/16		13/16	5/8 × 5/16	11/4	1/2 × 1/4	2	7/8 × 7/16	23/16
	5/8			11/16			11/16			11/16			17/16			17/16		25/16		23/8		37/8
	11/16			3/4			13/16			13/16			19/16			19/16		27/16		27/8		31/8
	3/4			13/16			7/8			7/8			15/8			15/8		21/8		21/8		35/8
	13/16			7/8			15/16			15/16			13/8			13/8		23/16		23/16		39/8
	7/8			1			11/16			11/16			17/16			17/16		21/16		21/16		43/8
	15/16			1/4 × 1/8			13/8			13/8			19/16			19/16		25/16		25/16		47/8
	1	1/4 × 1/16		13/16	13/16		11/2	11/2		27/16	27/16		49/8									
	11/16			1/4 × 1/16	15/8		15/8	29/16		29/16	51/8											
11/8	1/4 × 1/16		15/8	15/8	31/16	31/16	53/8															
1108	1/2	1/8 × 1/16	1615	1/2	1/8 × 1/16	2525	1/2	1/8 × 1/16	3030	7/8	1/2 × 1/4	4040	13/16	3/4 × 3/8	5050	37/8	1 × 1/2					
	9/16	3/16 × 3/32		9/16	3/16 × 3/32		5/8	1/4 × 1/8		5/8	5/8 × 3/16		15/16	3/4 × 1/4		15/8	7/8 × 1/4	11/2	5/8 × 5/16	4	1 × 1/4	27/16
	5/8			11/16			11/16			11/16			17/16			17/16		25/16		23/8		31/8
	11/16			3/4			13/16			13/16			19/16			19/16		27/16		27/8		35/8
	3/4			13/16			7/8			7/8			15/8			15/8		21/8		21/8		39/8
	13/16			7/8			15/16			15/16			13/8			13/8		23/16		23/16		43/8
	7/8			1			11/16			11/16			17/16			17/16		25/16		25/16		47/8
	15/16			1/4 × 1/8			13/8			13/8			19/16			19/16		27/16		27/16		49/8
	1	1/4 × 1/8		13/16	13/16		11/2	11/2		29/16	29/16		51/8									
	11/16			1/4 × 1/8	15/8		15/8	31/16		31/16	53/8											
11/8	1/4 × 1/8		15/8	15/8	33/16	33/16	55/8															
1210	1/2	1/8 × 1/16	1615	1/2	1/8 × 1/16	2525	1/2	1/8 × 1/16	3030	7/8	1/2 × 1/4	4040	13/16	3/4 × 3/8	5050	37/8	1 × 1/4					
	9/16	3/16 × 3/32		9/16	3/16 × 3/32		5/8	1/4 × 1/8		5/8	5/8 × 3/16		15/16	3/4 × 1/4		15/8	7/8 × 1/4	11/2	5/8 × 5/16	4	1 × 1/2	27/16
	5/8			11/16			11/16			11/16			17/16			17/16		25/16		23/8		31/8
	11/16			3/4			13/16			13/16			19/16			19/16		27/16		27/8		35/8
	3/4			13/16			7/8			7/8			15/8			15/8		21/8		21/8		39/8
	13/16			7/8			15/16			15/16			13/8			13/8		23/16		23/16		43/8
	7/8			1			11/16			11/16			17/16			17/16		25/16		25/16		47/8
	15/16			1/4 × 1/8			13/8			13/8			19/16			19/16		27/16		27/16		49/8
	1	1/4 × 1/8		13/16	13/16		11/2	11/2		29/16	29/16		51/8									
	11/16			1/4 × 1/8	15/8		15/8	31/16		31/16	53/8											
11/8	1/4 × 1/8		15/8	15/8	33/16	33/16	55/8															
1215	1/2	1/8 × 1/16	1615	1/2	1/8 × 1/16	2525	1/2	1/8 × 1/16	3030	7/8	1/2 × 1/4	4040	13/16	3/4 × 3/8	5050	37/8	1 × 1/2					
	9/16	3/16 × 3/32		9/16	3/16 × 3/32		5/8	1/4 × 1/8		5/8	5/8 × 3/16		15/16	3/4 × 1/4		15/8	7/8 × 1/4	11/2	5/8 × 5/16	4	1 × 1/4	27/16
	5/8			11/16			11/16			11/16			17/16			17/16		25/16		23/8		31/8
	11/16			3/4			13/16			13/16			19/16			19/16		27/16		27/8		35/8
	3/4			13/16			7/8			7/8			15/8			15/8		21/8		21/8		39/8
	13/16			7/8			15/16			15/16			13/8			13/8		23/16		23/16		43/8
	7/8			1			11/16			11/16			17/16			17/16		25/16		25/16		47/8
	15/16			1/4 × 1/8			13/8			13/8			19/16			19/16		27/16		27/16		49/8
	1	1/4 × 1/8		13/16	13/16		11/2	11/2		29/16	29/16		51/8									
	11/16			1/4 × 1/8	15/8		15/8	31/16		31/16	53/8											
11/8	1/4 × 1/8		15/8	15/8	33/16	33/16	55/8															
1310	1/2	1/8 × 1/16	1615	1/2	1/8 × 1/16	2525	1/2	1/8 × 1/16	3030	7/8	1/2 × 1/4	4040	13/16	3/4 × 3/8	5050	37/8	1 × 1/2					
	9/16	3/16 × 3/32		9/16	3/16 × 3/32		5/8	1/4 × 1/8		5/8	5/8 × 3/16		15/16	3/4 × 1/4		15/8	7/8 × 1/4	11/2	5/8 × 5/16	4	1 × 1/4	27/16
	5/8			11/16			11/16			11/16			17/16			17/16		25/16		23/8		31/8
	11/16			3/4			13/16			13/16			19/16			19/16		27/16		27/8		35/8
	3/4			13/16			7/8			7/8			15/8			15/8		21/8		21/8		39/8
	13/16			7/8			15/16			15/16			13/8			13/8		23/16		23/16		43/8
	7/8			1			11/16			11/16			17/16			17/16		25/16		25/16		47/8
	15/16			1/4 × 1/8			13/8			13/8			19/16			19/16		27/16		27/16		49/8
	1	5/16 × 5/32		13/16	13/16		11/2	11/2		29/16	29/16		51/8									
	11/16			1/4 × 1/8	15/8		15/8	31/16		31/16	53/8											
11/8	1/4 × 1/8		15/8	15/8	33/16	33/16	55/8															

△-Shallow keyway

TAPER BUSHING V-BELT PULLEYS 锥孔V型皮带轮

PULLEY dimensions

PART NO.	a	b	c	d	e	f	h	α°	
								34°	38°
SPZ[mm]	9,7	8,5	8	12	8	2	11	$p \leq 80$	$P > 80$
SPA[mm]	12,7	11	10	15	10	2,8	13,8	$p \leq 118$	$P > 118$
SPB[mm]	16,3	14	12,5	19	12,5	3,5	17,5	$p \leq 190$	$P > 190$
SPC[mm]	22	19	17	25,5	17	4,8	23,8	$p \leq 315$	$P > 315$



Belt dimensions

PART NO.	m	s	n	α°	
				34°	38°
SPZ[mm]	9,7	8	8,5	$p \leq 80$	$P > 80$
SPA[mm]	12,7	10	11	$p \leq 118$	$P > 118$
SPB[mm]	16	13	14	$p \leq 190$	$P > 190$
SPC[mm]	22	18	19	$p \leq 315$	$P > 315$

上海松铭传动

<http://www.shcoupling.com>